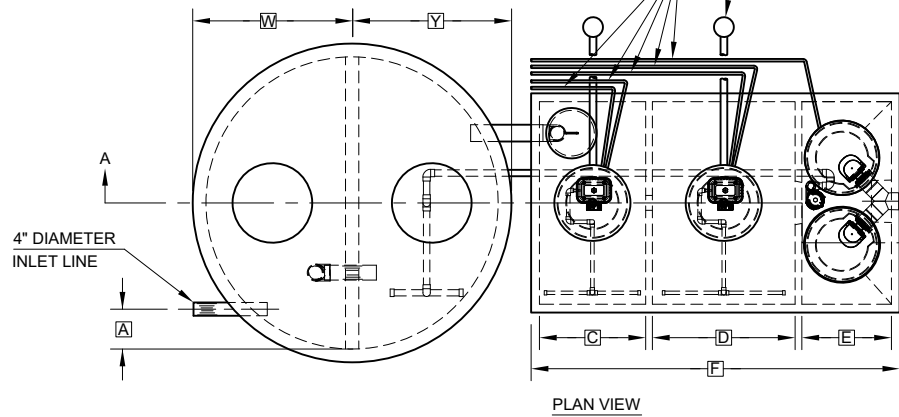


NOTE: REMOTE VENT MUST HAVE A MINIMUM DIAMETER OF 2 INCHES AND MUST TERMINATE A MINIMUM OF 18 INCHES ABOVE GRADE, 1 FOOT FROM PROPERTY LINES, AND 3 FEET FROM ANY WINDOWS OR DOORWAY.

REMOTE VENT WITH CARBON FILTER DEVICE

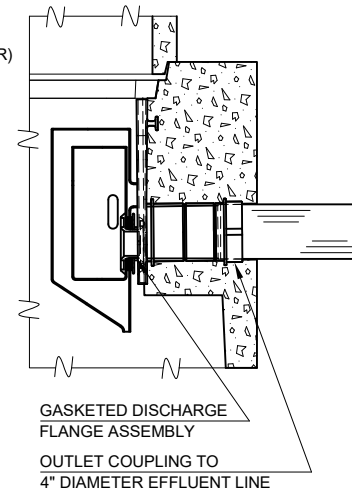
ELECTRICAL CONDUITS

4" DIAMETER EFFLUENT LINE (DUAL OUTLETS MAY BE COMBINED OUTSIDE CLARIFIER)



PLAN VIEW

NOTE: SYSTEMS INSTALLED IN TRAFFIC AREAS MUST UTILIZE HEAVY-DUTY LOCKING CAST IRON COVERS AND CASTINGS FOR ALL SYSTEM ACCESS OPENINGS AND PRETREATMENT TANK COVER SLAB, AS PREVIOUSLY APPROVED BY SCDHS FOR HS-20 LOADING.

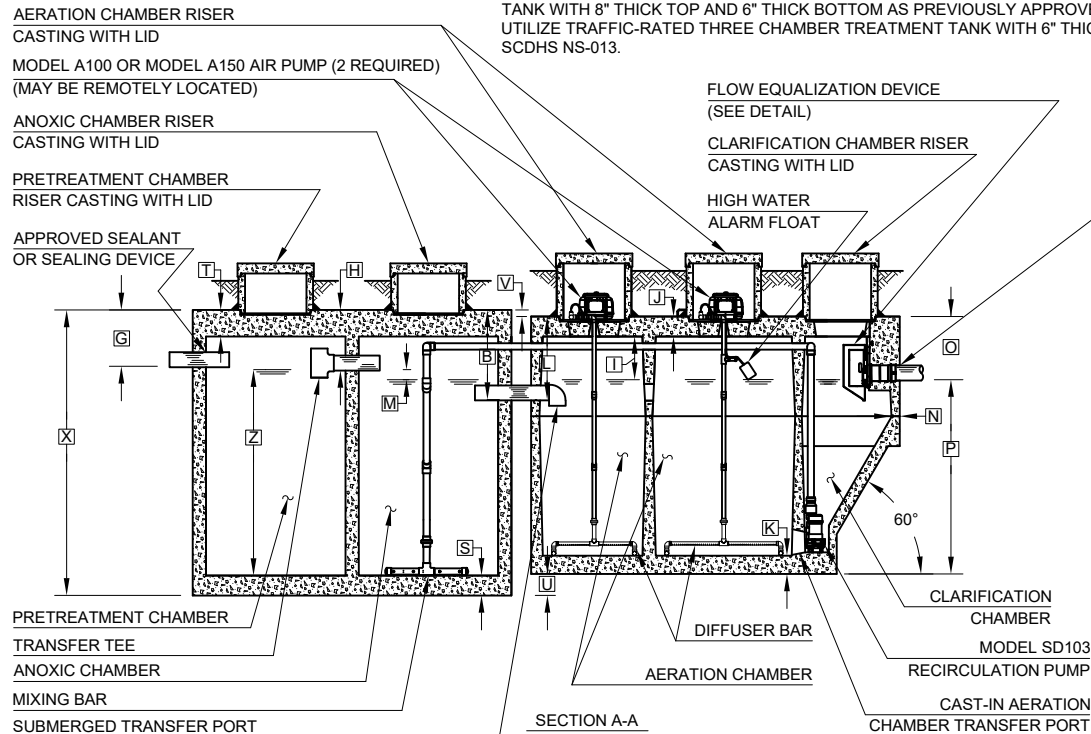


FLOW EQUALIZATION DEVICE DETAIL

GENERAL NOTES:

- ① FALL THROUGH THE HYDRO-KINETIC® PLANT FROM INLET INVERT TO OUTLET INVERT IS FOUR INCHES. INLET INVERT IS TWELVE INCHES BELOW TANK TOP.
- ② ON DEEPER INSTALLATIONS, RISERS MUST BE USED TO EXTEND CASTINGS TO GRADE.
- ③ TANK REINFORCED PER ACI STD. 318.
- ④ ALL ACCESS COVERS WEIGH IN EXCESS OF SEVENTY-FIVE POUNDS EACH TO PREVENT UNAUTHORIZED ACCESS.
- ⑤ CONTACT THE LOCAL, LICENSED HYDRO-KINETIC® DISTRIBUTOR FOR ELECTRICAL REQUIREMENTS.
- ⑥ COLLECT EFFLUENT SAMPLES FROM FLOW EQUALIZATION DEVICE INSTALLED IN CLARIFIER.
- ⑦ PRETREATMENT AND ANOXIC CHAMBERS MAY BE INCLUDED AS INTEGRAL COMPONENTS OF THE TREATMENT TANK.

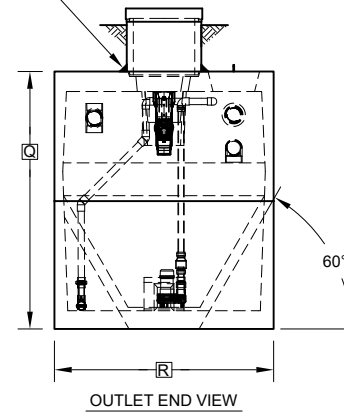
NOTE: SYSTEMS INSTALLED IN TRAFFIC AND NON-TRAFFIC AREAS MUST UTILIZE 1,500 GALLON TRAFFIC-RATED PRETREATMENT/ANOXIC TANK WITH 8" THICK TOP AND 6" THICK BOTTOM AS PREVIOUSLY APPROVED BY SCDHS. SYSTEMS INSTALLED IN TRAFFIC AREAS MUST UTILIZE TRAFFIC-RATED THREE CHAMBER TREATMENT TANK WITH 6" THICK TOP AND 5-1/2" THICK BOTTOM AS APPROVED UNDER SCDHS NS-013.



SECTION A-A

SOLVENT WELD CONNECTION

GROUT OR SYNTHETIC SEAL



OUTLET END VIEW

PROJECT ENGINEER'S APPROVAL:
I (WE) HEREBY CERTIFY THAT THIS DRAWING HAS BEEN CHECKED AND IS APPROVED FOR USE IN CONFORMITY WITH THE CONTRACT DOCUMENTS.

DATE: _____

NAME: _____

CONTRACTOR'S CERTIFICATION:
I (WE) HEREBY CERTIFY THAT THIS DRAWING HAS BEEN CHECKED AND IS APPROVED FOR USE IN CONFORMITY WITH THE CONTRACT DOCUMENTS.

DATE: _____

NAME: _____

CRITICAL DIMENSIONS

| | | | |
|---|-----------|---|------------|
| A | 1'-0" | N | 0'-2 1/2" |
| B | 2'-3" | O | 1'-7" |
| C | 2'-8" | P | 4'-10 1/2" |
| D | 3'-7" | Q | 6'-5 1/2" |
| E | 2'-3" | R | 5'-6" |
| F | 9'-3" | S | 0'-6" |
| G | 1'-5" | T | 0'-8" |
| H | 1'-6" | U | 0'-6 1/2" |
| I | 1'-1" | V | 0'-2" |
| J | 0'-6" | W | 4'-0" |
| K | 0'-5 1/2" | X | 7'-2" |
| L | 2'-1" | Y | 4'-0" |
| M | 0'-3" | Z | 5'-6" |

NOTE: SYSTEMS CERTIFIED BY NSF TO NSF/ANSI STANDARD 40 MUST INCLUDE MODEL A100 AIR PUMP.

NOTE: TOTAL SYSTEM CAPACITY: 2,500 GALLONS
RATED CAPACITY: 1,000 GALLONS PER DAY

NOTE: A TWO CHAMBER 1,500 GALLON TANK IS UTILIZED FOR THE PRETREATMENT AND ANOXIC CHAMBER. THE PRETREATMENT AND ANOXIC CHAMBERS EACH HAVE A VOLUME OF 750 GALLONS.

U.S. AND FOREIGN PATENTS PENDING

norweco HYDRO-KINETIC® MODEL 1000 WASTEWATER TREATMENT SYSTEM WITHOUT BIO-FILM REACTOR H-20 DESIGN LOAD

DATE: 05-06-2026
DRAWN BY: JMM
CHECKED BY: CLB
DATE: 04-29-2026
SCALE: NTS

© MMXXVI
PC-2-0353