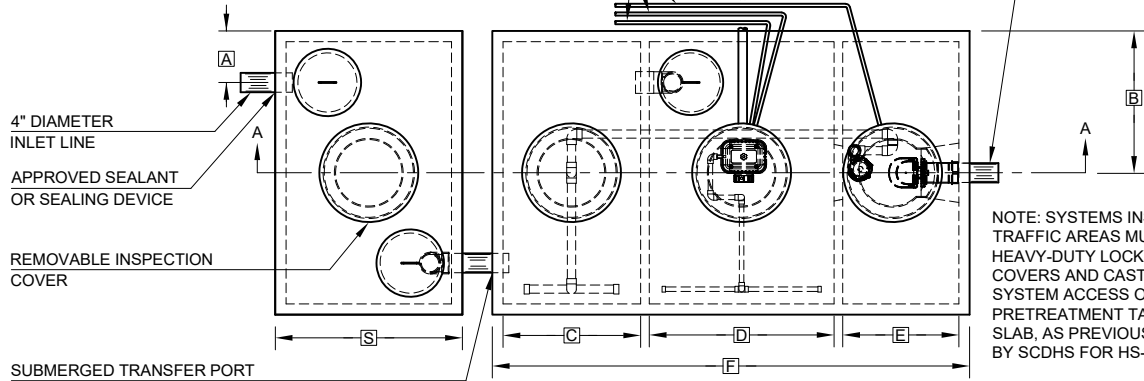


NOTE: REMOTE VENT MUST HAVE A MINIMUM DIAMETER OF 2 INCHES AND MUST TERMINATE A MINIMUM OF 18 INCHES ABOVE GRADE, 1 FOOT FROM PROPERTY LINES, AND 3 FEET FROM ANY WINDOWS OR DOORWAY.

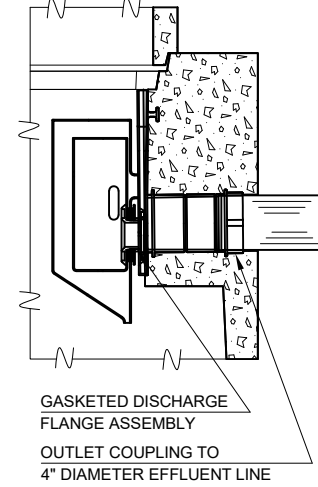
REMOTE VENT WITH CARBON FILTER DEVICE
ELECTRICAL CONDUITS
4" DIAMETER EFFLUENT LINE



PLAN VIEW

NOTE: SYSTEMS INSTALLED IN TRAFFIC AREAS MUST UTILIZE HEAVY-DUTY LOCKING CAST IRON COVERS AND CASTINGS FOR ALL SYSTEM ACCESS OPENINGS AND PRETREATMENT TANK COVER SLAB, AS PREVIOUSLY APPROVED BY SCDHS FOR HS-20 LOADING.

NOTE: SYSTEMS INSTALLED IN TRAFFIC AREAS MUST UTILIZE 500 GALLON TRAFFIC-RATED PRETREATMENT TANK WITH 6" THICK TOP AND 5-1/2" THICK BOTTOM AS APPROVED UNDER SCDHS NS-010, AND TRAFFIC-RATED THREE CHAMBER TREATMENT TANK WITH 6" THICK TOP AND 5-1/2" THICK BOTTOM AS APPROVED UNDER SCDHS NS-011.



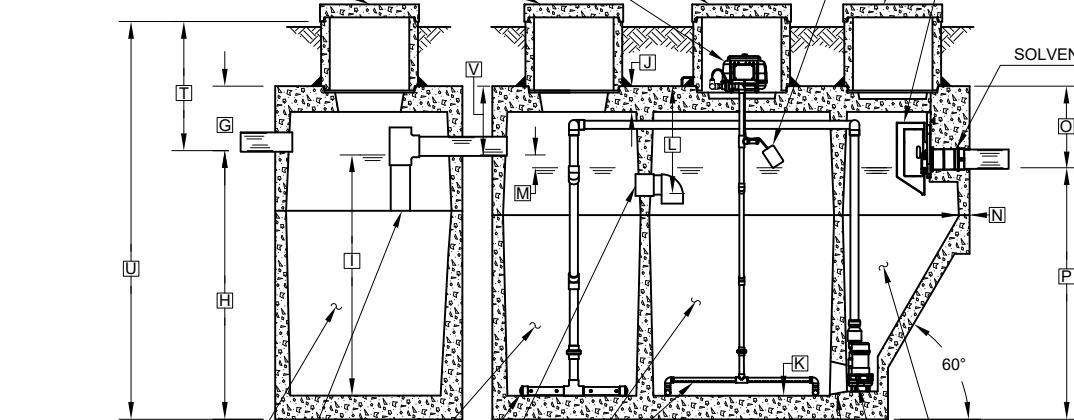
GASKETED DISCHARGE FLANGE ASSEMBLY
OUTLET COUPLING TO 4" DIAMETER EFFLUENT LINE

FLOW EQUALIZATION DEVICE DETAIL

GENERAL NOTES:

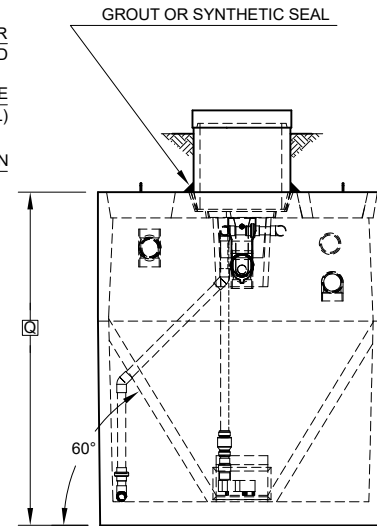
- ① FALL THROUGH THE HYDRO-KINETIC® PLANT FROM INLET INVERT TO OUTLET INVERT IS FOUR INCHES. INLET INVERT IS TWELVE INCHES BELOW TANK TOP.
- ② ON DEEPER INSTALLATIONS, RISERS MUST BE USED TO EXTEND CASTINGS TO GRADE.
- ③ TANK REINFORCED PER ACI STD. 318.
- ④ ALL ACCESS COVERS WEIGH IN EXCESS OF SEVENTY-FIVE POUNDS EACH TO PREVENT UNAUTHORIZED ACCESS.
- ⑤ CONTACT THE LOCAL, LICENSED HYDRO-KINETIC® DISTRIBUTOR FOR ELECTRICAL REQUIREMENTS.
- ⑥ COLLECT EFFLUENT SAMPLES FROM FLOW EQUALIZATION DEVICE INSTALLED IN CLARIFIER.
- ⑦ PRETREATMENT CHAMBER MAY BE INCLUDED AS AN INTEGRAL COMPONENT OF THE TREATMENT TANK.

AERATION CHAMBER RISER CASTING WITH LID
MODEL A100 OR MODEL A150 AIR PUMP (MAY BE REMOTELY LOCATED)
ANOXIC CHAMBER RISER CASTING WITH LID
PRETREATMENT CHAMBER RISER CASTING WITH LID



SECTION A-A

PRETREATMENT CHAMBER
TRANSFER TEE
ANOXIC CHAMBER
MIXING BAR
SUBMERGED TRANSFER PORT
AERATION CHAMBER
DIFFUSER BAR
CLARIFICATION CHAMBER
MODEL SD103 RECIRCULATION PUMP
CAST-IN AERATION CHAMBER TRANSFER PORT
HIGH WATER ALARM FLOAT
CLARIFICATION CHAMBER RISER CASTING WITH LID
FLOW EQUALIZATION DEVICE (SEE DETAIL)
SOLVENT WELD CONNECTION



OUTLET END VIEW

NOTE: SYSTEMS CERTIFIED BY NSF TO NSF/ANSI STANDARD 40 MUST INCLUDE MODEL A100 AIR PUMP.

NOTE: TOTAL SYSTEM CAPACITY: 1,500 GALLONS
RATED CAPACITY: 500/600 GALLONS PER DAY

PROJECT ENGINEER'S APPROVAL:
I (WE) HEREBY CERTIFY THAT THIS DRAWING HAS BEEN CHECKED AND IS APPROVED FOR USE IN CONFORMITY WITH THE CONTRACT DOCUMENTS.

DATE: _____

NAME: _____

CONTRACTOR'S CERTIFICATION:
I (WE) HEREBY CERTIFY THAT THIS DRAWING HAS BEEN CHECKED AND IS APPROVED FOR USE IN CONFORMITY WITH THE CONTRACT DOCUMENTS.

DATE: _____

NAME: _____

CRITICAL DIMENSIONS

A	1'-0"	N	0'-2 1/2"
B	2'-9"	O	1'-7"
C	2'-8"	P	4'-10 1/2"
D	3'-7"	Q	6'-5 1/2"
E	2'-3"	R	5'-6"
F	9'-3"	S	3'-7 1/2"
G	1'-3"	T	2'-4" TO 2'-7"
H	5'-2 1/2"	U	7'-6 1/2" TO 7'-9 1/2"
I	4'-8"	V	1'-4"
J	0'-6"	W	
K	0'-5 1/2"	X	
L	2'-1"	Y	
M	0'-3"	Z	

U.S. AND FOREIGN PATENTS PENDING		DESIGN DATE	REVISION
		HYDRO-KINETIC® MODEL 600 WASTEWATER TREATMENT SYSTEM WITHOUT BIO-FILM REACTOR H-20 DESIGN LOAD	DRAWN BY: CLB APPROVED BY: JMM DATE: 04-30-2026 SCALE: NTS
© MMXXVI	<small>THIS DRAWING IS THE PROPERTY OF NORWECO. IT IS TO BE USED ONLY FOR THE PROJECT AND SITE SPECIFICALLY IDENTIFIED HEREON. ANY REUSE OR REPRODUCTION OF THIS DRAWING WITHOUT THE WRITTEN PERMISSION OF NORWECO IS STRICTLY PROHIBITED.</small>	DRAWING NO.: PC-2-0351	