

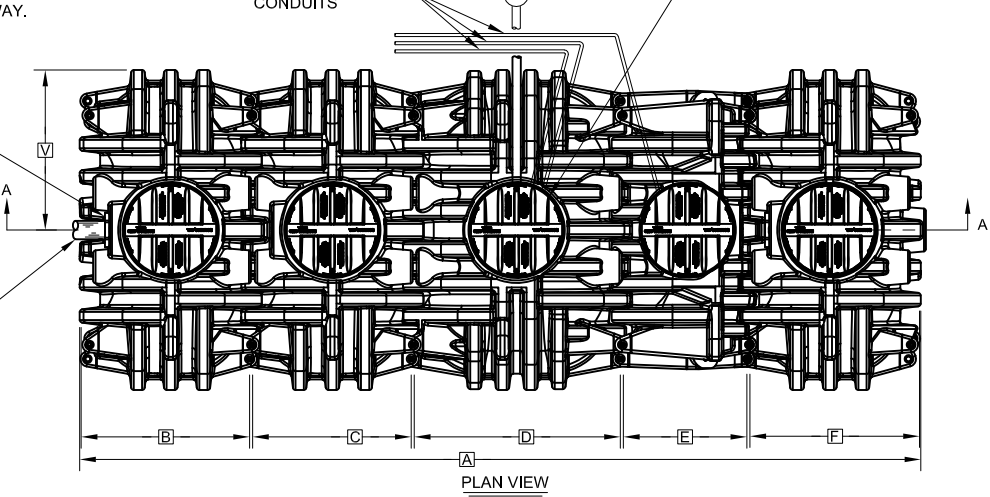
NOTE: REMOTE VENT MUST HAVE A MINIMUM DIAMETER OF 2 INCHES AND MUST TERMINATE A MINIMUM OF 18 INCHES ABOVE GRADE, 1 FOOT FROM PROPERTY LINES, AND 3 FEET FROM ANY WINDOWS OR DOORWAY.

REMOTE VENT WITH CARBON FILTER DEVICE  
ELECTRICAL CONDUITS

AERATOR MOUNTING RISER AND NON-VENTED COVER

APPROVED SEALING DEVICE

4" DIAMETER INLET LINE



NON-VENTED COVER

MODEL A100 OR MODEL A150 AIR PUMP (MAY BE REMOTELY LOCATED)

DIFFUSER BAR

NON-VENTED COVERS

PRETREATMENT CHAMBER

SUBMERGED TRANSFER PORT

ANOXIC CHAMBER

MIXING BAR

NOTE: SYSTEMS CERTIFIED BY NSF TO NSF/ANSI STANDARD 40 MUST INCLUDE MODEL A100 AIR PUMP.

AERATION CHAMBER  
TRANSFER PORT

SECTION A-A

HIGH WATER ALARM FLOAT

CLARIFICATION RISER WITH NON-VENTED COVER

FLOW EQUALIZATION DEVICE (SEE DETAIL)

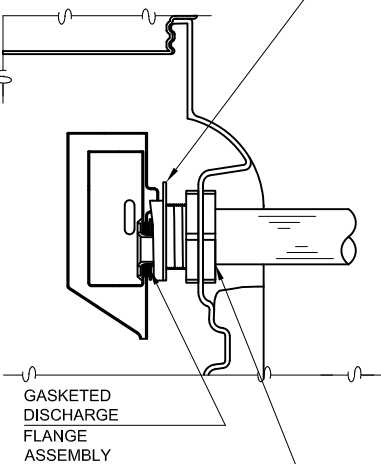
ALARM FLOAT SWITCH

PUMP CHAMBER RISER AND COVER

GASKETED RISER

ON/OFF FLOAT SWITCH  
PUMP CHAMBER  
FINAL CLARIFICATION CHAMBER  
MODEL SD103 RECIRCULATION PUMP

RECEIVING FLANGE



APPROVED SEALING DEVICE TO 4" DIAMETER EFFLUENT LINE

FLOW EQUALIZATION DEVICE DETAIL

GENERAL NOTES:

- FALL THROUGH HYDRO-KINETIC® PLANT FROM INLET INVERT TO OUTLET INVERT IS FOUR INCHES.
- ON DEEPER INSTALLATIONS, RISERS MUST BE USED TO EXTEND TANK RISERS TO GRADE.
- REMOVABLE COVERS ON RISERS ARE EACH SECURED TO PREVENT UNAUTHORIZED ACCESS.
- CONTACT THE LOCAL, LICENSED HYDRO-KINETIC® DISTRIBUTOR FOR ELECTRICAL REQUIREMENTS.
- AIR PUMP MAY BE MOUNTED INSIDE THE RISER ABOVE THE AERATION CHAMBER OR MAY BE REMOTE MOUNTED UP TO 100 FEET FROM THE TANK.
- COLLECT EFFLUENT SAMPLES FROM FLOW EQUALIZATION DEVICE INSTALLED IN CLARIFIER.

PROJECT ENGINEER'S APPROVAL:  
I (WE) HEREBY CERTIFY THAT THIS DRAWING HAS BEEN CHECKED AND IS APPROVED FOR USE IN CONFORMITY WITH THE CONTRACT DOCUMENTS.

DATE: \_\_\_\_\_

NAME: \_\_\_\_\_

CONTRACTOR'S CERTIFICATION:  
I (WE) HEREBY CERTIFY THAT THIS DRAWING HAS BEEN CHECKED AND IS APPROVED FOR USE IN CONFORMITY WITH THE CONTRACT DOCUMENTS.

DATE: \_\_\_\_\_

NAME: \_\_\_\_\_

CRITICAL DIMENSIONS

A	17'- 2 3/4"	N	0'- 0 3/8"
B	3'- 5 1/4"	O	0'- 6"
C	3'- 2 3/4"	P	0'- 0 3/8"
D	4'- 2 1/4"	Q	1'- 8"
E	2'- 8 3/4"	R	4'- 3 1/2"
F	3'- 4"	S	5'- 11 1/2"
G	1'- 4"	T	1'- 4"
H	4'- 7 1/2"	U	6'- 6"
I	0'- 4"	V	3'- 3"
J	0'- 3/8"	W	
K	1'- 0"	X	
L	0'- 0 3/4"	Y	
M	4'- 3"	Z	

U.S. AND FOREIGN PATENTS PENDING © MMXXV	<b>norweco</b> HYDRO-KINETIC® GREEN MODEL 600 SYSTEM WITH PUMP TANK, PUMP AND FLOAT SWITCHES	DESIGNED BY	CLB
		APPROVED BY	JMM
		DATE	04-14-2025
		SCALE	NTS
THESE DRAWINGS ARE THE PROPERTY OF NORWECO. NO REPRODUCTION OR TRANSMISSION OF ANY PART WITHOUT WRITTEN PERMISSION FROM NORWECO.		DRAWING NO.	PC-2-0328

NOTE: TOTAL SYSTEM CAPACITY: 2,235 GALLONS  
TREATMENT SYSTEM CAPACITY: 1,785 GALLONS  
PUMP CHAMBER CAPACITY BELOW INLET: 450 GALLONS  
PUMP CHAMBER TOTAL CAPACITY: 520 GALLONS  
RATED CAPACITY: 500/600 GALLONS PER DAY