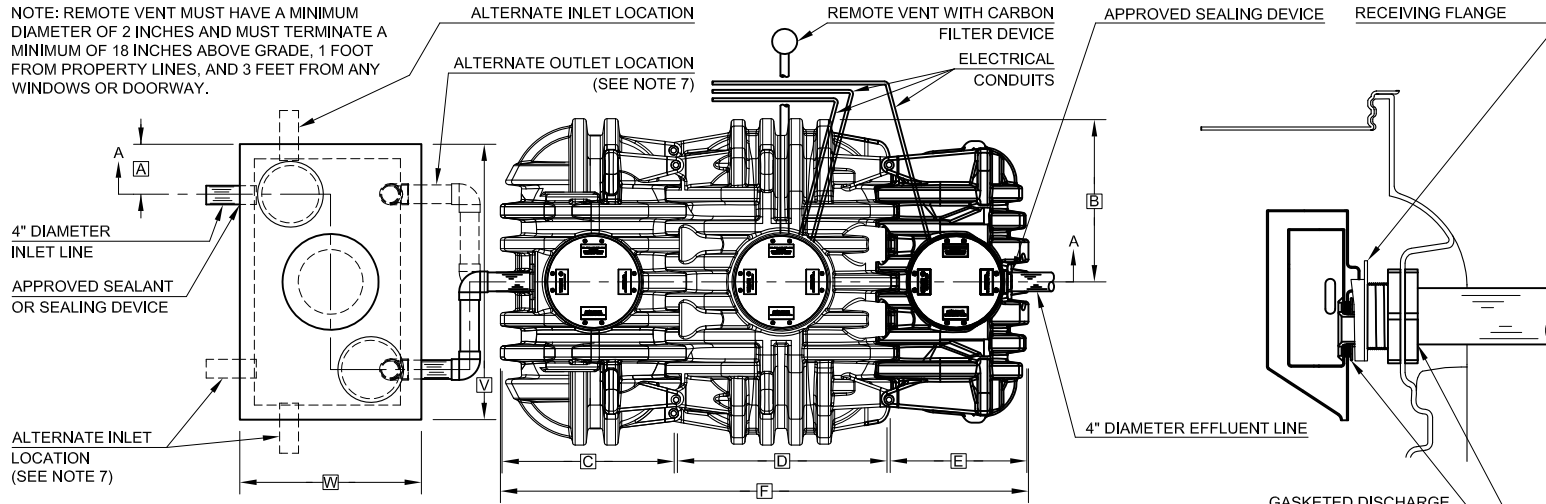


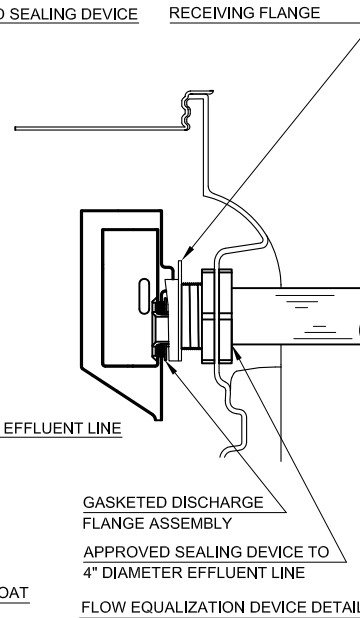
NOTE: REMOTE VENT MUST HAVE A MINIMUM DIAMETER OF 2 INCHES AND MUST TERMINATE A MINIMUM OF 18 INCHES ABOVE GRADE, 1 FOOT FROM PROPERTY LINES, AND 3 FEET FROM ANY WINDOWS OR DOORWAY.



PLAN VIEW

GENERAL NOTES:

- ① FALL THROUGH THE HYDRO-KINETIC® PLANT FROM INLET INVERT TO OUTLET INVERT IS FOUR INCHES. INLET INVERT IS TWELVE INCHES BELOW TANK TOP.
- ② ON DEEPER INSTALLATIONS, RISERS MUST BE USED TO EXTEND CASTINGS TO GRADE.
- ③ TANK REINFORCED PER ACI STD. 318.
- ④ REMOVABLE COVERS ON RISERS ARE EACH SECURED TO PREVENT UNAUTHORIZED ACCESS.
- ⑤ CONTACT THE LOCAL, LICENSED HYDRO-KINETIC® DISTRIBUTOR FOR ELECTRICAL REQUIREMENTS.
- ⑥ COLLECT EFFLUENT SAMPLES FROM FLOW EQUALIZATION DEVICE INSTALLED IN CLARIFIER.
- ⑦ LOCATE PRETREATMENT CHAMBER INLET AND OUTLET IN OPPOSING CORNERS TO MAXIMIZE RETENTION TIME.



RECEIVING FLANGE
GASKETED DISCHARGE FLANGE ASSEMBLY
APPROVED SEALING DEVICE TO 4" DIAMETER EFFLUENT LINE
FLOW EQUALIZATION DEVICE DETAIL

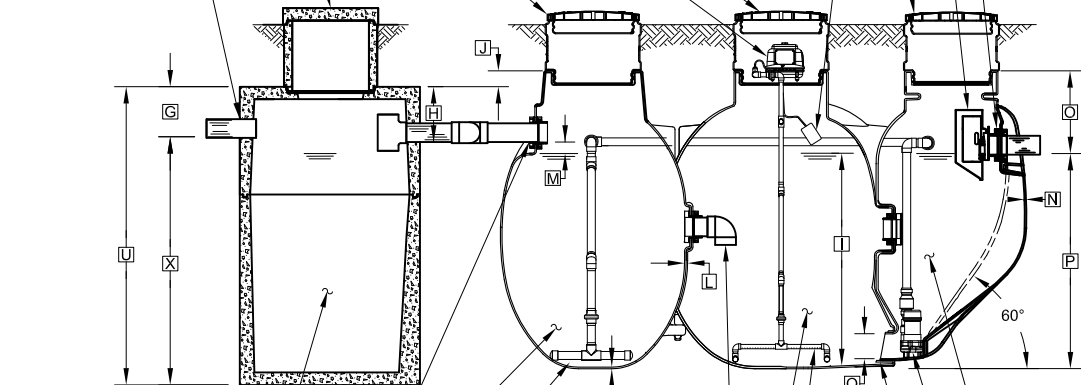
AERATION CHAMBER RISER WITH NON-VENTED LID

MODEL A100 OR MODEL A150 AIR PUMP (MAY BE REMOTELY LOCATED)

ANOXIC CHAMBER RISER WITH NON-VENTED LID

PRETREATMENT CHAMBER RISER WITH NON-VENTED LID

APPROVED SEALANT OR SEALING DEVICE



SECTION A-A

PRETREATMENT CHAMBER

TRANSFER PORT

ANOXIC CHAMBER

MIXING BAR

NOTE: PRETREATMENT CHAMBER MINIMUM REQUIREMENTS SHALL BE: 400 GALLONS CAPACITY, 7 GALLONS PER INCH OF LIQUID LEVEL AND 9 INCHES OF FREEBOARD.

HIGH WATER ALARM FLOAT

CLARIFICATION CHAMBER RISER WITH NON-VENTED LID

FLOW EQUALIZATION DEVICE (SEE DETAIL)

APPROVED SEALING DEVICE

60°

60°

60°

60°

60°

60°

60°

60°

60°

60°

60°

60°

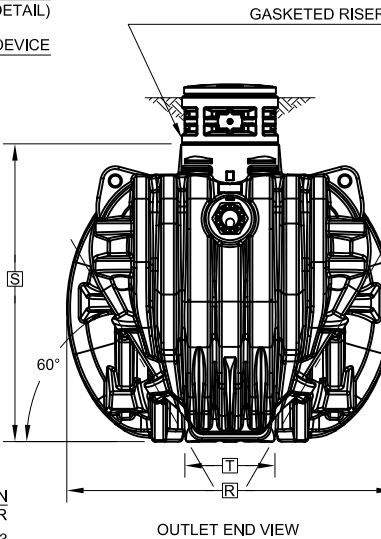
60°

60°

60°

60°

60°



OUTLET END VIEW

NOTE: SYSTEMS CERTIFIED BY NSF TO NSF/ANSI STANDARD 40 MUST INCLUDE MODEL A100 AIR PUMP.

NOTE: TOTAL SYSTEM CAPACITY: 1,785 GALLONS RATED CAPACITY: 500/600 GALLONS PER DAY

PROJECT ENGINEER'S APPROVAL:
I (WE) HEREBY CERTIFY THAT THIS DRAWING HAS BEEN CHECKED AND IS APPROVED FOR USE IN CONFORMITY WITH THE CONTRACT DOCUMENTS.

DATE: _____

NAME: _____

CONTRACTOR'S CERTIFICATION:
I (WE) HEREBY CERTIFY THAT THIS DRAWING HAS BEEN CHECKED AND IS APPROVED FOR USE IN CONFORMITY WITH THE CONTRACT DOCUMENTS.

DATE: _____

NAME: _____

CRITICAL DIMENSIONS

A	1'- 0"	N	0'- 0 3/8"
B	3'- 3"	O	1'- 8"
C	3'- 5 1/4"	P	4'- 3 1/2"
D	4'- 2 1/4"	Q	0'- 6"
E	2'- 8 3/4"	R	6'- 6"
F	10'- 6 1/2"	S	5'- 11 1/2"
G	1'- 0"	T	1'- 4"
H	1'- 1"	U	6'- 0"
I	4'- 3"	V	5'- 6"
J	0'- 4"	W	3'- 7 1/2"
K	0'- 0 3/8"	X	5'- 0"
L	0'- 0 3/4"	Y	
M	0'- 3"	Z	

U.S. AND FOREIGN PATENTS PENDING	norweco	HYDRO-KINETIC® GREEN MODEL 600 WASTEWATER TREATMENT SYSTEM WITH EXTERNAL PRETREATMENT WITHOUT BIO-FILM REACTOR	DATE: 07-07-2023	DESIGNED BY: JMM
		© MMXXIII	DRAWING NO: NTS	PC-2-0287