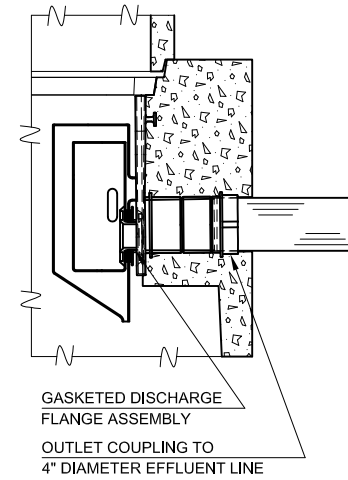
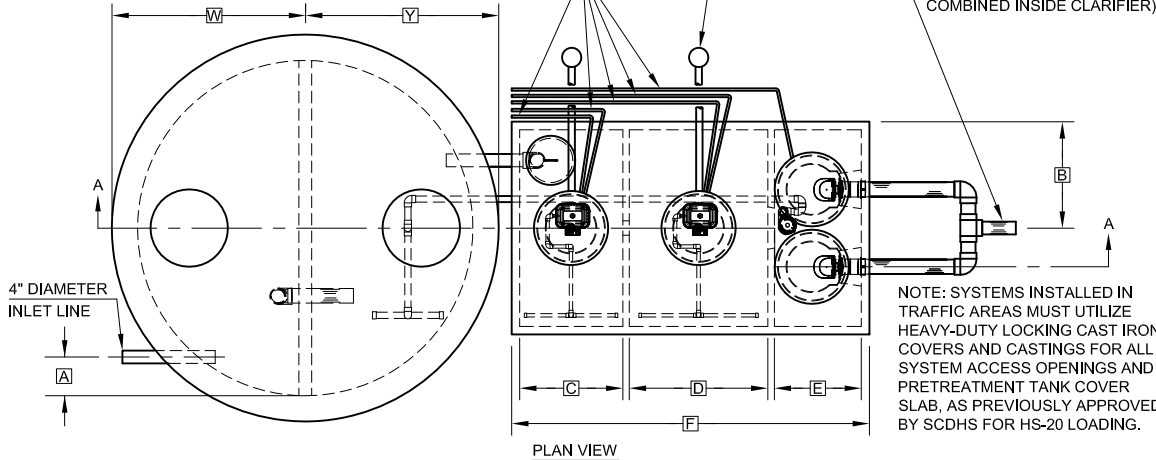


NOTE: REMOTE VENT MUST HAVE A MINIMUM DIAMETER OF 2 INCHES AND MUST TERMINATE A MINIMUM OF 18 INCHES ABOVE GRADE, 1 FOOT FROM PROPERTY LINES, AND 3 FEET FROM ANY WINDOWS OR DOORWAY.

REMOTE VENT WITH CARBON FILTER DEVICE
ELECTRICAL CONDUITS

4" DIAMETER EFFLUENT LINE
(DUAL OUTLETS MAY BE COMBINED INSIDE CLARIFIER)



GENERAL NOTES:

- ① FALL THROUGH THE HYDRO-KINETIC® PLANT FROM INLET INVERT TO OUTLET INVERT IS FOUR INCHES. INLET INVERT IS TWELVE INCHES BELOW TANK TOP.
- ② ON DEEPER INSTALLATIONS, RISERS MUST BE USED TO EXTEND CASTINGS TO GRADE.
- ③ TANK REINFORCED PER ACI STD. 318.
- ④ ALL ACCESS COVERS WEIGH IN EXCESS OF SEVENTY-FIVE POUNDS EACH TO PREVENT UNAUTHORIZED ACCESS.
- ⑤ CONTACT THE LOCAL, LICENSED HYDRO-KINETIC® DISTRIBUTOR FOR ELECTRICAL REQUIREMENTS.
- ⑥ COLLECT EFFLUENT SAMPLES FROM FLOW EQUALIZATION DEVICE INSTALLED IN CLARIFIER.
- ⑦ PRETREATMENT AND ANOXIC CHAMBERS MAY BE INCLUDED AS INTEGRAL COMPONENTS OF THE TREATMENT TANK.

AERATION CHAMBER RISER CASTING WITH LID

MODEL A100 OR MODEL A150 AIR PUMP (2 REQUIRED)
(MAY BE REMOTELY LOCATED)

ANOXIC CHAMBER RISER CASTING WITH LID

PRETREATMENT CHAMBER RISER CASTING WITH LID

APPROVED SEALANT OR SEALING DEVICE

NOTE: SYSTEMS INSTALLED IN TRAFFIC AND NON-TRAFFIC AREAS MUST UTILIZE 2,000 GALLON TRAFFIC-RATED PRETREATMENT/ANOXIC TANK WITH 8" THICK TOP AND 6" THICK BOTTOM AS PREVIOUSLY APPROVED BY SCDHS. SYSTEMS INSTALLED IN TRAFFIC AREAS MUST UTILIZE TRAFFIC-RATED THREE CHAMBER TREATMENT TANK WITH 6" THICK TOP AND 5-1/2" THICK BOTTOM AS APPROVED UNDER SCDHS NS-015. ADDITIONAL THICKNESS TO TANK TOP AND BOTTOM ADDED TO OUTSIDE OF TANK SHOWN.

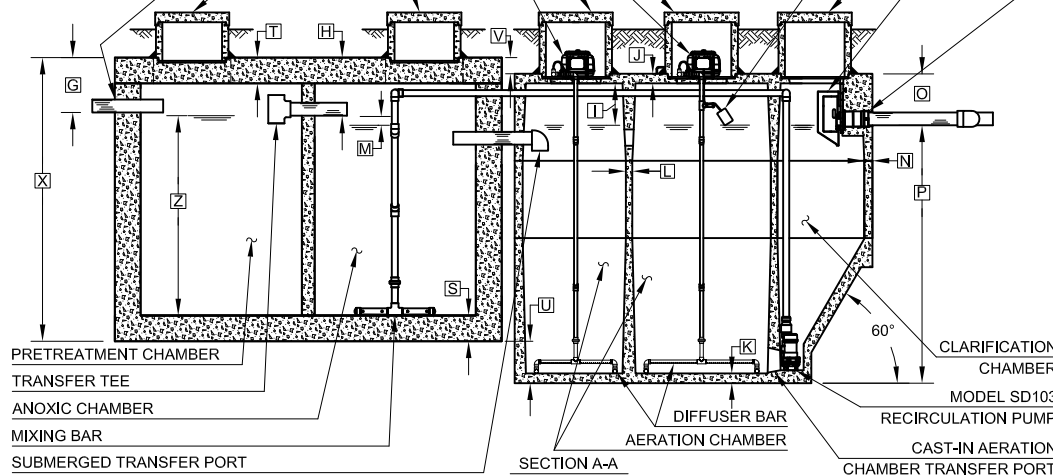
FLOW EQUALIZATION DEVICE
(SEE DETAIL)

CLARIFICATION CHAMBER RISER CASTING WITH LID

HIGH WATER ALARM FLOAT

SOLVENT WELD CONNECTION

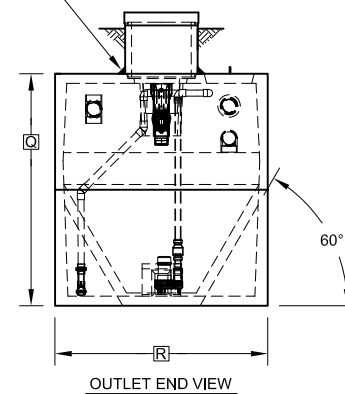
GROUT OR SYNTHETIC SEAL



NOTE: A TWO CHAMBER 2,000 GALLON TANK IS UTILIZED FOR THE PRETREATMENT AND ANOXIC CHAMBER. THE PRETREATMENT AND ANOXIC CHAMBERS EACH HAVE A VOLUME OF 1,000 GALLONS.

NOTE: SYSTEMS CERTIFIED BY NSF TO NSF/ANSI STANDARD 40 MUST INCLUDE MODEL A100 AIR PUMP.

NOTE: TOTAL SYSTEM CAPACITY: 3,750 GALLONS RATED CAPACITY: 1,500 GALLONS PER DAY



PROJECT ENGINEER'S APPROVAL:
I (WE) HEREBY CERTIFY THAT THIS DRAWING HAS BEEN CHECKED AND IS APPROVED FOR USE IN CONFORMITY WITH THE CONTRACT DOCUMENTS.

DATE: _____

NAME: _____

CONTRACTOR'S CERTIFICATION:
I (WE) HEREBY CERTIFY THAT THIS DRAWING HAS BEEN CHECKED AND IS APPROVED FOR USE IN CONFORMITY WITH THE CONTRACT DOCUMENTS.

DATE: _____

NAME: _____

CRITICAL DIMENSIONS

A	1'-0"	N	0'-2 1/2"
B	2'-9"	O	1'-4"
C	2'-8"	P	6'-8"
D	3'-7"	Q	8'-0"
E	2'-3"	R	5'-6"
F	9'-3"	S	0'-8"
G	1'-5"	T	0'-8"
H	1'-6"	U	1'-1"
I	1'-1"	V	0'-5"
J	0'-3"	W	5'-0"
K	0'-3"	X	7'-4"
L	0'-2"	Y	5'-0"
M	0'-3"	Z	5'-2"

U.S. AND FOREIGN PATENTS PENDING		REVISED BY	10-10-2024	REVISION	C
		DESIGNED BY	MT	DATE	JMM
© MMXXI	<p>HYDRO-KINETIC® MODEL 1500 WASTEWATER TREATMENT SYSTEM WITHOUT BIO-FILM REACTOR</p>	DATE	11-12-2021	SCALE	NTS
	<p>THE QUALITY OF THIS PRODUCT IS GUARANTEED BY NORWECO. NORWECO SHALL BE RESPONSIBLE FOR ANY DEFECTS OR DAMAGE TO THE PRODUCT WITHOUT LIMITATION OF REMEDY.</p>	DRAWING NO.			PC-2-0284